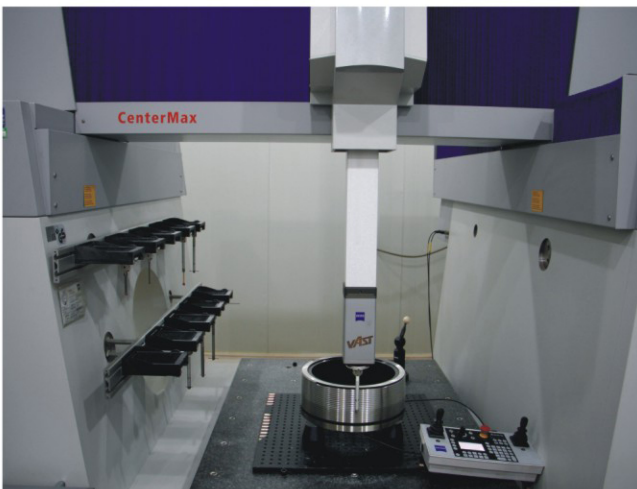
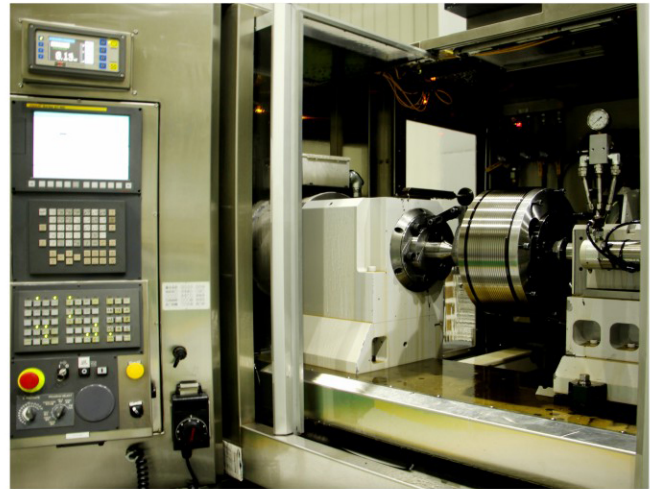
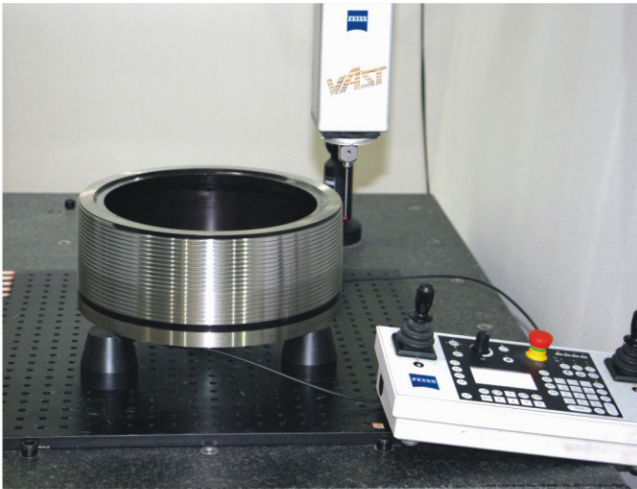


◆ 螺纹量规 Thread Gauges

品质保障 Quality Assurance

螺纹量规恒温间保持 $20^{\circ}\text{C} \pm 1^{\circ}\text{C}$ ，拥有两台LM650美国Drake数控螺纹磨床、五台德国Buderus螺纹磨床、CenterMas900×1200×700德国Zeiss三坐标测量机、MSXL400荷兰螺纹单项测量仪等设备和API规范中所有规格型号的校对规，有效保证螺纹量规的制造精度和检测校准精度。

The temperature in temperature-controlled workshop of thread gauges keeps at $20^{\circ}\text{C} \pm 1^{\circ}\text{C}$ all year round. There are two sets of USA Drake CNC Thread Grinders, five sets of German Buderus thread grinders, German CenterMas900×1200×700 Zeiss Contura coordinate measuring machine (CMM), Holland MSXL400 Thread Monomial Gauge Measuring Instrument and all kinds of master gauges as per API specification, which ensures the precision of manufacturing and measurement.

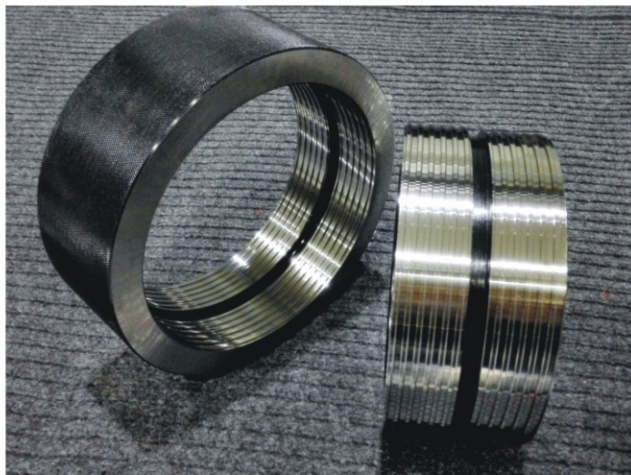




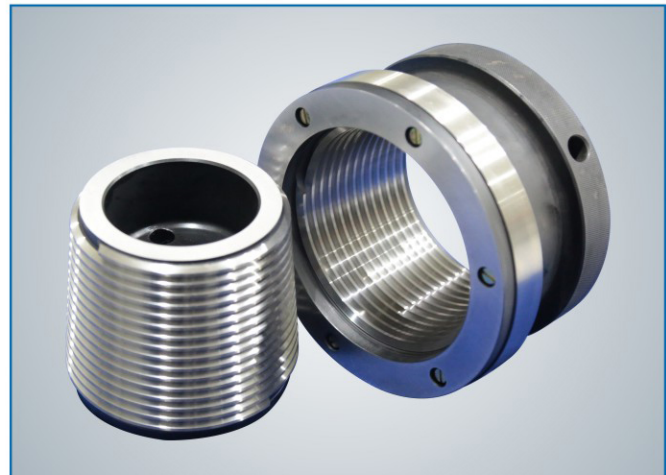
中国石油内部优势产品 Superior Product of CNPC

品种有API Spec 5B和API Spec 7-2标准螺纹量规、特殊螺纹齿形和直径达27英寸（685mm）的大直径螺纹量规。

Standard thread gauges according to API Spec 5B and API Spec 7-2, special thread form, or thread gauge in diameter as large as 27" (685mm) can be provided.



套铣管螺纹量规
Washover pipe thread gauge



NC50旋转台肩式校对螺纹量规
NC50 rotary shouldered connection thread gauge

产品目录 Product Summary

API SPEC 7-2 GAUGES WORKING/MASTERS

自锁式取芯螺纹量规 Self-lock Coring Thread Gauge

外筒 External Barrel Coring			内筒 Internal Barrel Coring		
Size	Lead	Taper	Size	Lead	Taper
OQX121	4.233 (6)	1:16(3/4)	IQX85	3.175 (8)	1:16(3/4)
OQX133	4.233 (6)	1:16(3/4)	IQX88.9	3.175 (8)	1:16(3/4)
OQX146	4.233 (6)	1:16(3/4)	IQX101.6	3.175 (8)	1:16(3/4)
OQX172	4.233 (6)	1:16(3/4)	IQX121	3.175 (8)	1:16(3/4)
OQX180	4.233 (6)	1:16(3/4)	IQX127	3.175 (8)	1:16(3/4)
OQX194	4.233 (6)	1:16(3/4)	IQX139.7	3.175 (8)	1:16(3/4)

旋转台肩式螺纹量规 Rotary Shouldered Connection Thread Gauge

数字型NC Numbered Connections				正规型REG Regular Rotary			
Size	Lead	Taper	Thd form	Size	Lead	Taper	Thd form
NC23	6.35 (4)	1:6 (2)	V-038R	1	4.233 (6)	1:8 (1.5)	V-055
NC26	6.35 (4)	1:6 (2)	V-038R	1-1/2	4.233 (6)	1:8 (1.5)	V-055
NC31	6.35 (4)	1:6 (2)	V-038R	2-3/8	5.08 (5)	1:4 (3)	V-040
NC35	6.35 (4)	1:6 (2)	V-038R	2-7/8	5.08 (5)	1:4 (3)	V-040
NC38	6.35 (4)	1:6 (2)	V-038R	3-1/2	5.08 (5)	1:4 (3)	V-040
NC40	6.35 (4)	1:6 (2)	V-038R	4-1/2	5.08 (5)	1:4 (3)	V-040
NC44	6.35 (4)	1:6 (2)	V-038R	5-1/2	6.35 (4)	1:4 (3)	V-050
NC46	6.35 (4)	1:6 (2)	V-038R	6-5/8	6.35 (4)	1:6 (2)	V-050
NC50	6.35 (4)	1:6 (2)	V-038R	7-5/8	6.35 (4)	1:4 (3)	V-050
NC56	6.35 (4)	1:4 (3)	V-038R	8-5/8	6.35 (4)	1:4 (3)	V-050
NC61	6.35 (4)	1:4 (3)	V-038R				
NC70	6.35 (4)	1:4 (3)	V-038R				
NC77	6.35 (4)	1:4 (3)	V-038R				

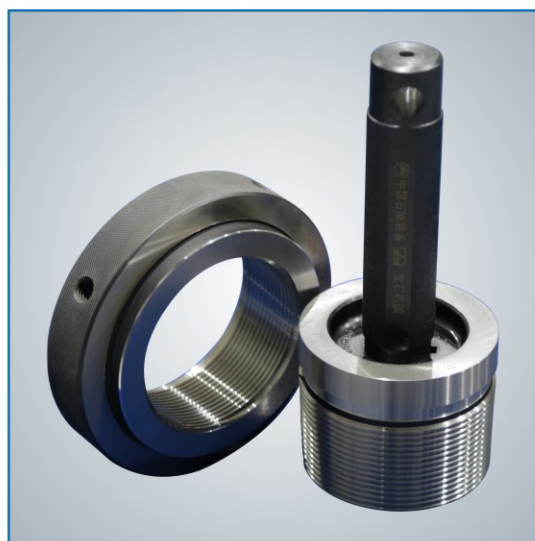
内平型 IF Internal Flush				贯眼型 FH Full Hole			
5-1/2	6.35 (4)	1:6 (2)	V-038R	2-7/8	5.08 (5)	1:4 (3)	V-040
6-5/8	6.35 (4)	1:6 (2)	V-038R	3-1/2	5.08 (5)	1:4 (3)	V-040
				4-1/2	5.08 (5)	1:4 (3)	V-040
				5-1/2	6.35 (4)	1:6 (2)	V-050
				6-5/8	6.35 (4)	1:6 (2)	V-050



非优先连接旋转台肩式螺纹量规 Non-preferred Rotary Shouldered Connection Thread Gauge

Size	Lead	Taper	Thd form	Size	Lead	Taper	Thd form
2-3/8 OH LW	6.35(4)	1:8(1.5)	V-076	3-1/2 H90	7.257(3.5)	1:6 (2)	90-V-050
2-7/8 OH LW	6.35(4)	1:8(1.5)	V-076	4 H90	7.257(3.5)	1:6 (2)	90-V-050
2-7/8 OH SW	6.35(4)	1:8(1.5)	V-076	4-1/2 H90	7.257(3.5)	1:6 (2)	90-V-050
3-1/2 OH SW	6.35(4)	1:8(1.5)	V-076	5 H90	7.257(3.5)	1:6 (2)	90-V-050
4 OH LW	6.35(4)	1:8(1.5)	V-076	5-1/2 H90	7.257(3.5)	1:6 (2)	90-V-050
4-1/2 OH SW	6.35(4)	1:8(1.5)	V-076	6-5/8 H90	7.257(3.5)	1:6 (2)	90-V-050
2-3/8 PAC	6.35(4)	1:8(1.5)	V-076	7 H90	7.257(3.5)	1:4 (3)	90-V-050
2-7/8 PAC	6.35(4)	1:8(1.5)	V-076	7-5/8 H90	7.257(3.5)	1:4 (3)	90-V-050
3-1/2 PAC	6.35(4)	1:8(1.5)	V-076	8-5/8 H90	7.257(3.5)	1:4 (3)	90-V-050
2-3/8 SH	6.35(4)	1:6(2)	V-038R	2-3/8 SL H90	8.467(3)	5:48(1.25)	90-V-084
4 SH	6.35(4)	1:6(2)	V-038R	2-7/8 SL H90	8.467(3)	5:48(1.25)	90-V-084
2-3/8 WO	6.35(4)	1:6(2)	V-038R	3-1/2 SL H90	8.467(3)	5:48(1.25)	90-V-084
2-7/8 WO	6.35(4)	1:6(2)	V-038R	GOST Z-161	6.35(4)	1:6 (2)	V-050
3-1/2 WO	6.35(4)	1:6(2)	V-038R	GOST Z-189	6.35(4)	1:6 (2)	V-050
2-7/8 XH	6.35(4)	1:6 (2)	V-038R				
3-1/2 XH	6.35(4)	1:6 (2)	V-038R				

API SPEC 5B GAUGES WORKING/MASTERS



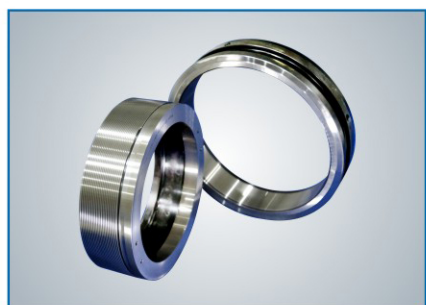
3-1/2TBG油管螺纹量规
3-1/2TBG tubing thread gauge

油管螺纹量规 Tubing Thread Gauge

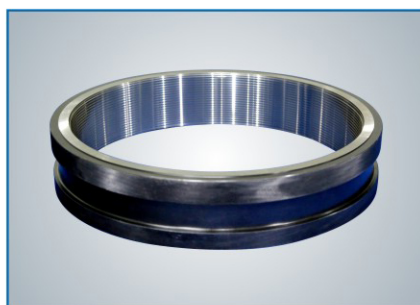
Size	外加厚油管 UPSET TUBING		不加厚油管 NON-UPSET TUBING	
	Lead	Taper	Lead	Taper
1.050	2.54 (10)	1:16 (3/4)	2.54 (10)	1:16 (3/4)
1.315	2.54 (10)	1:16 (3/4)	2.54 (10)	1:16 (3/4)
1.660	2.54 (10)	1:16 (3/4)	2.54 (10)	1:16 (3/4)
1.900	2.54 (10)	1:16 (3/4)	2.54 (10)	1:16 (3/4)
2-3/8	3.175 (8)	1:16 (3/4)	2.54 (10)	1:16 (3/4)
2-7/8	3.175 (8)	1:16 (3/4)	2.54 (10)	1:16 (3/4)
3-1/2	3.175 (8)	1:16 (3/4)	2.54 (10)	1:16 (3/4)
4	3.175 (8)	1:16 (3/4)	3.175 (8)	1:16 (3/4)
4-1/2	3.175 (8)	1:16 (3/4)	3.175 (8)	1:16 (3/4)

套管螺纹量规 Casing Thread Gauge

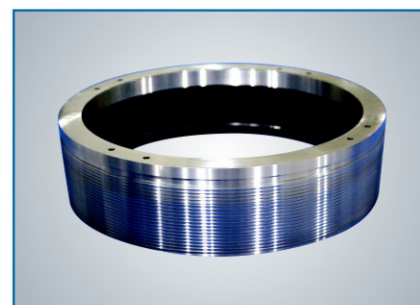
Size	套管圆螺纹量规 Casing		套管偏梯形螺纹量规 Buttress Casing	
	Lead	Taper	Lead	Taper
4-1/2	3.175 (8)	1:16 (3/4)	5.08 (5)	1:16 (3/4)
5	3.175 (8)	1:16 (3/4)	5.08 (5)	1:16 (3/4)
5-1/2	3.175 (8)	1:16 (3/4)	5.08 (5)	1:16 (3/4)
6-5/8	3.175 (8)	1:16 (3/4)	5.08 (5)	1:16 (3/4)
7	3.175 (8)	1:16 (3/4)	5.08 (5)	1:16 (3/4)
7-5/8	3.175 (8)	1:16 (3/4)	5.08 (5)	1:16 (3/4)
8-5/8	3.175 (8)	1:16 (3/4)	5.08 (5)	1:16 (3/4)
9-5/8	3.175 (8)	1:16 (3/4)	5.08 (5)	1:16 (3/4)
10-3/4	3.175 (8)	1:16 (3/4)	5.08 (5)	1:16 (3/4)
11-3/4	3.175 (8)	1:16 (3/4)	5.08 (5)	1:16 (3/4)
13-3/8	3.175 (8)	1:16 (3/4)	5.08 (5)	1:16 (3/4)
16	3.175 (8)	1:16 (3/4)	5.08 (5)	1:12 (1)
18-5/8	3.175 (8)	1:16 (3/4)	5.08 (5)	1:12 (1)
20	3.175 (8)	1:16 (3/4)	5.08 (5)	1:12 (1)



13-3/8套管圆螺纹量规
13-3/8 casing thread gauge



20BCSG套管偏梯形螺纹环规
20BCSG thread ring gauge



20BCSG套管偏梯形螺纹塞规
20BCSG thread plug gauge

管线管螺纹量规 Line Pipe

Size	Lead	Taper	Size	Lead	Taper
1	2.209 (11 1/2)	1:16 (3/4)	6	3.175 (8)	1:16 (3/4)
1-1/4	2.209 (11 1/2)	1:16 (3/4)	8	3.175 (8)	1:16 (3/4)
1-1/2	2.209 (11 1/2)	1:16 (3/4)	10	3.175 (8)	1:16 (3/4)
2	2.209 (11 1/2)	1:16 (3/4)	12	3.175 (8)	1:16 (3/4)
2-1/2	3.175 (8)	1:16 (3/4)	14	3.175 (8)	1:16 (3/4)
3	3.175 (8)	1:16 (3/4)	16	3.175 (8)	1:16 (3/4)
3-1/2	3.175 (8)	1:16 (3/4)	18	3.175 (8)	1:16 (3/4)
4	3.175 (8)	1:16 (3/4)	20	3.175 (8)	1:16 (3/4)
5	3.175 (8)	1:16 (3/4)			



2LP管线管螺纹量规
2LP thread gauge